



THE UNIVERSITY OF BRITISH COLUMBIA

**Human Early Learning Partnership**

Library Processing Centre 440 – 2206 East Mall  
Vancouver, BC, Canada V6T 1Z3  
Tel:604-822-1278 Fax: 604-822-0640

Dear Parent/Guardian,

We are writing this letter to tell you about a research study being conducted in your school district, and across BC. The results from this study will help your community learn about ways to help make sure that all children get the best start in life.

**Project Background and Purpose**

Canadian researchers, with the help of kindergarten teachers and principals, have developed a questionnaire called the Early Development Instrument (also called the EDI) to help learn more about our children's development.

**How is the EDI done?**

Kindergarten teachers fill out the EDI for each child in their class. The questions are answered by teachers outside of class time. Students' names are never on the EDI.

**How are the data reported?**

We provide reports for groups of children only; no individual names are reported in any way. We create maps showing results for neighbourhoods across BC and we provide community summaries to each school district. For privacy reasons, we do not report results for neighbourhoods with fewer than 35 students.

**How will the EDI data be used and stored?**

All EDI information is used only for research purposes under the *Freedom of Information and Protection of Privacy Act (FIPPA)*. We keep the EDI information in a secure location at UBC.

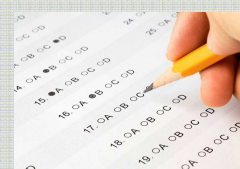
**What is involved in project participation?**

Your child's kindergarten teacher will complete the EDI questions in February. Teachers are trained to complete the EDI- there are no risks if you take part in this study.

**Your taking part is your choice and will not affect any services that your family receives from your school district. You have the right to remove your child from the study. If you wish to remove your child from the study, please contact your child's teacher by January 30<sup>th</sup>.**



*Schools across BC are working on an early childhood research project.*



*Kindergarten teachers fill in questionnaires about children's development. Children do not take part in the research.*



*My child is never named, and my child's information is protected. I can learn more about the study online at:*

[www.earlylearning.ubc.ca/EDI/](http://www.earlylearning.ubc.ca/EDI/)

*To be printed on: SCHOOL DISTRICT LETTERHEAD*

**Questions or comments?**

If you have any questions about the EDI, please contact Gillian Corless by email at [gillian.corless@ubc.ca](mailto:gillian.corless@ubc.ca) or by phone at 604-822-1836 in Vancouver. If you have questions or concerns about your treatment during the project you can call the Research Subject Information Line at the Office of Research Services at the University of British Columbia at any time. The phone number is 604-822-8598.

Thank you,

**(School District EDI Contact)**

and



Professor Clyde Hertzman, MD  
Director, Human Early Learning Partnership (HELP)  
Telephone: 604-822-3002  
Email: [clyde.hertzman@ubc.ca](mailto:clyde.hertzman@ubc.ca)



*I can contact  
(name), at School  
District (#), at  
(telephone #) with  
any questions  
about the project.*